



Product information.

Crop year 2011/12

Red fruits

STRAWBERRY

Main information about strawberries. Huelva

	Area (ha)	Production (t)	Yield (kg/ha)
Crop year 2011/12*	7,150	280,000	39160.84
Difference 2011/12- average 2008/11	0.11	0.09	-0.01

Source: Figures calculated on the basis of data from the Progress of surface and production. CAPMA (Spanish acronym for the Regional Ministry for Agriculture, Fisheries and Environment of Andalucía)

*September 2012.

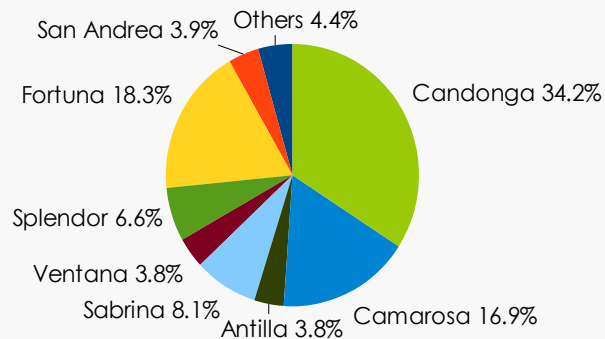
Value of production (thousands €)		Average ex-works price. 2011/12 (€/kg)	
2011/12*	2010/11*	Fresh**	For processing **
263,815	256,387	1.12	0.31

Exports of strawberries. Huelva

	2011/12	2010/11	2009/10	2008/09
Volume (t)	236,286	188,342	191,373	194,068
Value (thousands €)	425,876	350,583	328,425	318,737

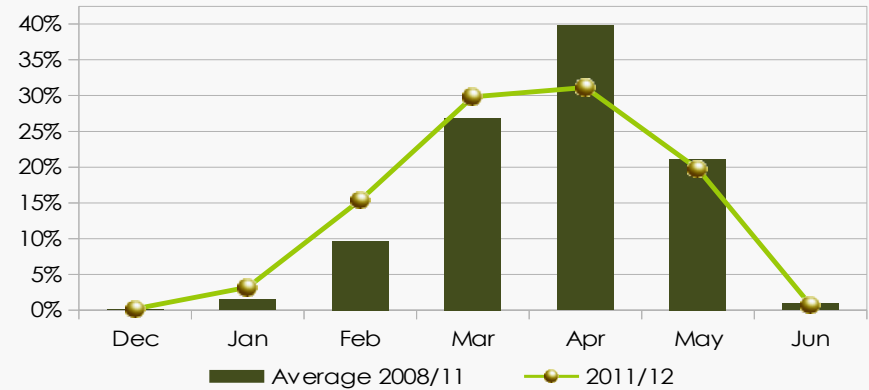
Source: DATACOM EX. Data from December to July.

Commercial types on the basis of area cultivated. Crop year 2011/12



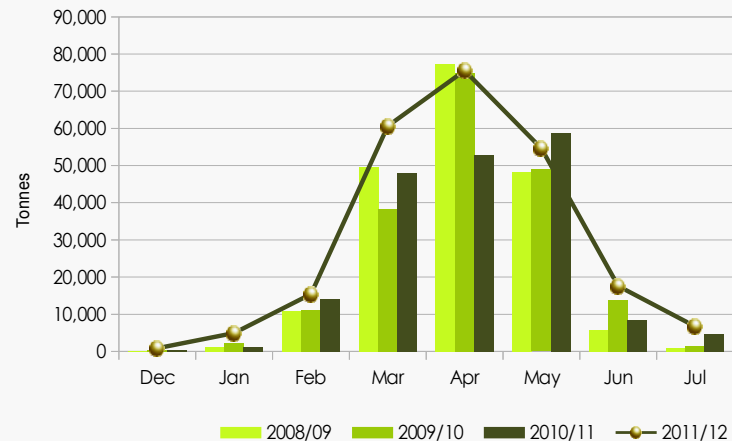
Source: prepared by the author on the basis of data from companies

Monthly breakdown of the volume traded



Source: prepared by the author on the basis of data from companies

Monthly breakdown of the exports



Source: DATACOMEX

- In 2011/12, the cultivation of strawberries has increased in the province of Huelva, both with regard to the area cultivated and production. Therefore, its turnover has also increased.
- Harvesting is carried out earlier than it was usual due to the favourable climate of autumn and winter, and to the significant increase of early varieties.
- About 85% of the strawberries produced in Huelva is exported.

Commercial types of strawberries



CANDONGA STRAWBERRY

Early variety grown by a company in Huelva. It has homogeneous fruits in size and shape, without deformities. Although it is less productive than other varieties, its production costs are lower because 95% of the total production is marketable.



FORTUNA STRAWBERRY

Early and very productive variety bred at the University of Florida, US. It maintains its quality until the end of the crop year. The fruits are medium-large and cone shape. It has slightly sunken achenes, a fact that gives a smooth appearance to the skin. Its long stalk facilitate its harvesting.



CAMAROSA STRAWBERRY

Variety of high productivity and post-harvest resistance. It was bred at the University of California, US. The fruit is large, its shape is almost cylindrical and has a deep red colour. It is the most cultivated variety of strawberry in the world.



SABRINA STRAWBERRY

Variety developed in the province of Huelva by the same company that developed the Candonga variety, with which it is complementary. Sabrina is harvested earlier than Candonga and its fruit is bigger. It is perfect to be marketed in boxes of 1 or 2 kg, which is the preferred packaging in Spain.



SPLENDOR STRAWBERRY

Early and very productive variety that grows well and with very good quality throughout the crop year. Its fruit is conical, medium size and has a bright red colour. It has a long post-harvest life, fact that enables to export it to remote markets.