

Total or partial reproduction of the data or graphics of this publication is permitted provided their source is quoted.



Product information. Crop year 2011/12

Greenhouse horticulture

PEPPER

Main information about greenhouse peppers. Almeria

	Area (ha) (1)	Production (t) (1)	Yield (kg/m ²) (2)
Crop year 2011/12	7,388	512,945	6.94
Difference 2011/12 average 2008/11	-1%	13%	6%

Source: (1) Progress of surface and production. November 2012. CAPMA (Spanish acronym for the Regional Ministry for Agriculture, Fisheries and Environment of Andalucía)
 (2) Figures calculated on the basis of data from the Progress of surface and production. CAPMA

Value of production 2011/12 (thousands €)	Value of production 2010/11 (thousands €)	Average price 2011/12 (€/kg)
323,155	366,805	0.63

Source: prepared by the author on the basis of data from the Progress of surface and production. November 2012. Market and price observatory. CAPMA

	Square sweet pepper	Lamuyo pepper	Elongated sweet pepper
Average price (€/kg)	0.64	0.65	0.56

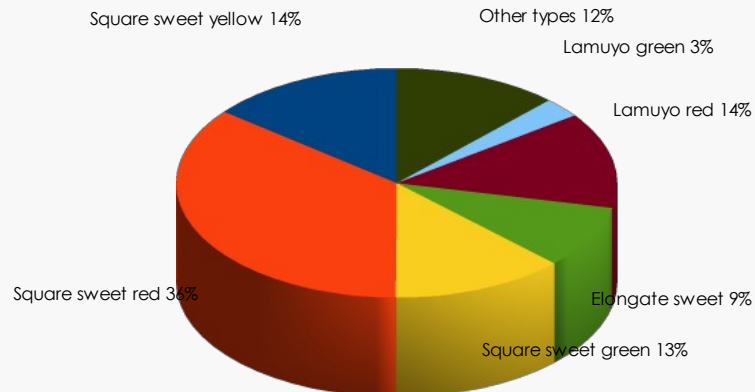
Source: Market and price observatory. CAPMA

Exports of pepper. Almeria

	2011/12	2010/11	2009/10	2008/09
Volume (t)	354,142	313,966	302,915	288,974
Value (thousands €)	412,977	419,786	348,544	453,021

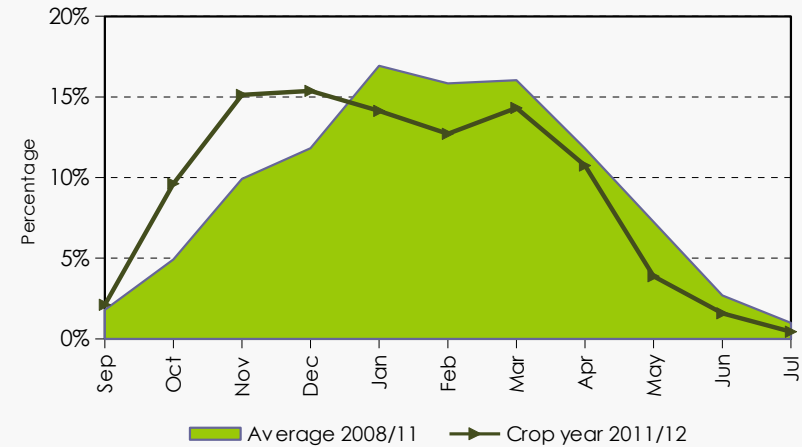
Source: DATACOMEX. The value of the exports corresponds to ex-works price.

Commercial types of peppers. Crop year 2011/12



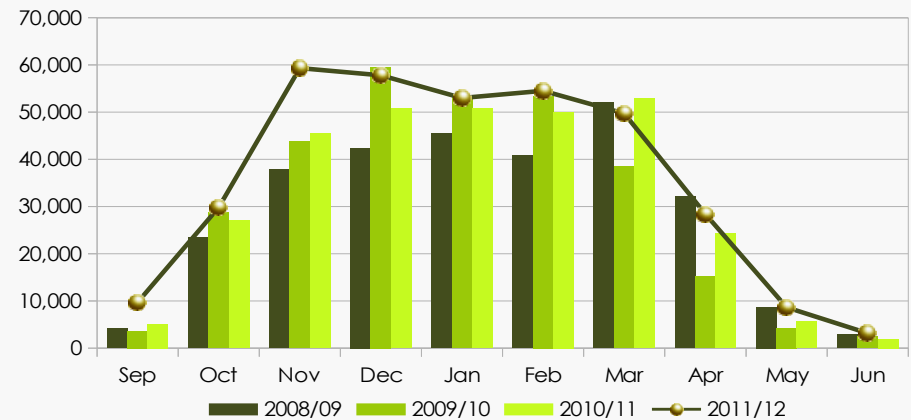
Source: prepared by the author on the basis of data from the Market and price observatory. CAPMA

Monthly breakdown of the volume traded



Source: prepared by the author on the basis of data from the Market and price observatory. CAPMA

Monthly breakdown of the exports



Source: prepared by the author on the basis of data from DATACOMEX.

- In 2011/12, the volume of exports represented 69% of the peppers grown in Almeria, growing 13% more than the previous crop year. However, their value decreased by 2%.
- The main destination of the exports is Germany, representing 31% of the exports, followed by the Netherlands (14%) and France (12%).

Commercial types of pepper



SQUARE SWEET PEPPERS

Square or truncated peppers that when ripen turn from green to their own variety colour. The most common varieties of square sweet peppers are red, yellow and, to a lesser extent, orange, when ripen.



LAMUYO PEPPERS

Rectangular peppers, although they are sometimes truncated. Depending on the variety, when ripen, their colour turn to red or yellow.



ELONGATED SWEET PEPPERS - ITALIAN

Conic peppers that can be more or less deformed. Their taste is sweet and, when ripen, they are red.



OTHER COMMERCIAL TYPES

This category called "other commercial types" includes those types of peppers less marketed, like *Padrón* peppers, hot peppers, other sweet peppers, etc. This classification is included in the Price Observatory under the name "not designated".