



Product information. Crop year 2011/12

Greenhouse Horticulture

AUBERGINE

Total or partial reproduction of the data or graphics of this publication is permitted provided their source is quoted.

Main information about greenhouse aubergines. Almeria

	Area (ha) (1)	Production (t) (1)	Yield (kg/m ²) (2)
Crop year 2011/12	1,890	187,655	9.92
Difference 2011/12 average 2008/11	1%	32%	31%

Source: (1) Progress of surface and production. November 2012. CAPMA (Spanish acronym for the Regional Ministry for Agriculture, Fisheries and Environment of Andalucía)
 (2) Figures calculated on the basis of data from the Progress of surface and production. CAPMA

Value of production 2011/12 (thousands €)	Value of production 2010/11 (thousands €)	Average price 2011/12 (€/kg)
71,309	63,878	0.38

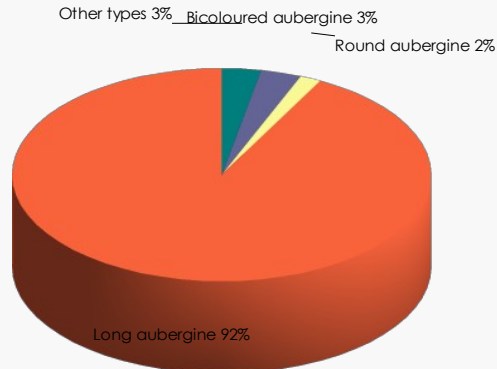
Source: prepared by the author on the basis of data from the Progress of surface and production. November 2012. Market and price observatory. CAPMA

Almeria's aubergine exports

	2011/12	2010/11	2009/10	2008/09
Volume (t)	110,932	90,410	81,758	72,994
Value (thousands €)	91,046	77,155	74,781	72,830

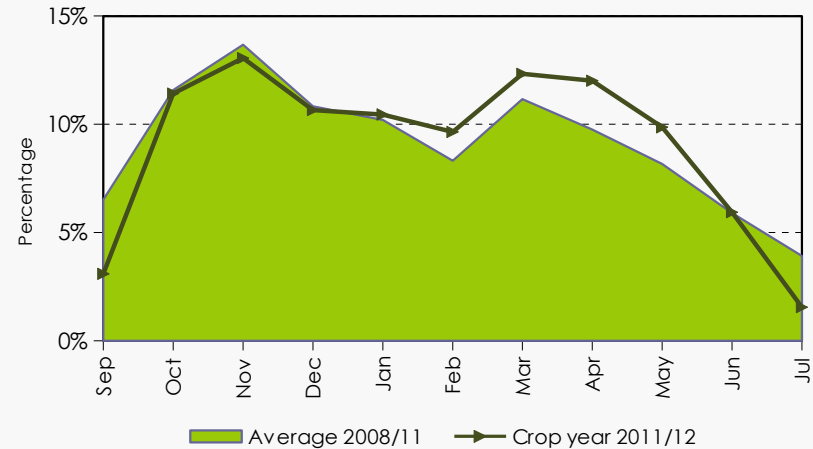
Source: DATACOMEX. The value of the exports corresponds to ex-works price.

Commercial types of aubergines. Crop year 2011/12



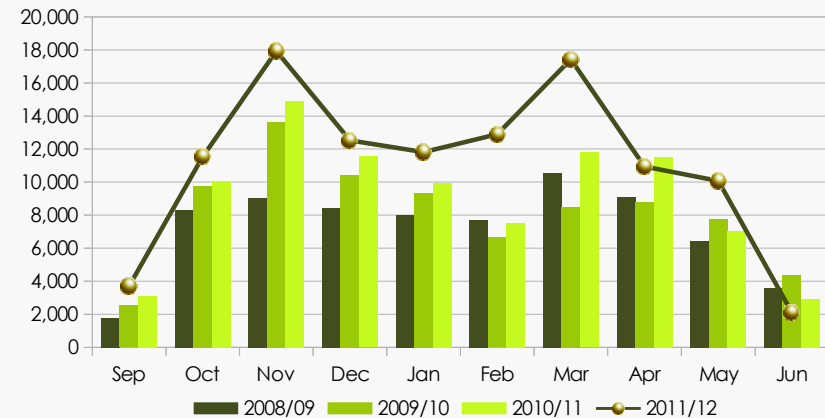
Source: prepared by the author on the basis of data from the Market and price observatory. CAPMA

Monthly breakdown of the trading volume



Source: prepared by the author on the basis of data from the Market and price observatory. CAPMA

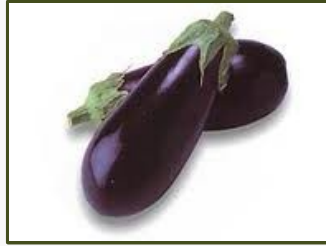
Monthly breakdown of the exports



Source: prepared by the author on the basis of data from DATACOMEX.

• The exports of aubergines account for 59% of the total production of Almeria. Their main destinations are Germany and France, representing 27% and 21% respectively. Italy, the Netherlands and the United Kingdom request lower volumes ranging from 14% to 16% of the total exports.

Commercial types of aubergines



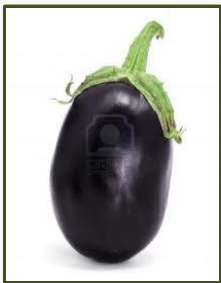
LONG AUBERGINE

Long and narrow aubergine. It stands out for the firmness of its flesh and its almost black colour.



BICOLOURED AUBERGINE

Aubergine characterised by its bicoloured skin (purple and white)



ROUND AUBERGINE

Round bright dark (black or purple) aubergine



OTHER COMMERCIAL TYPES

This category called "other commercial types" includes those types of aubergines less marketed, like the white aubergine.

This classification is included in the Price Observatory under the name "not designated".