

Product information. Crop year 2011/12

Greenhouse horticulture

MELON



Total or partial reproduction of the data or graphics of this publication is permitted provided their source is quoted.

Main information about greenhouse melons. Almeria

| | Area (ha) (1) | Production (t) (1) | Yield (kg/m ²) (2) |
|------------------------------------|---------------|--------------------|--------------------------------|
| Crop year 2011/12 | 3,740 | 135,105 | 3.61 |
| Difference 2011/12 average 2008/11 | -7% | -7% | -1% |

Source: (1) Progress of surface and production. November 2012. CAPMA (Spanish acronym for the Regional Ministry for Agriculture, Fisheries and Environment of Andalucía)
 (2) Figures calculated on the basis of data from the Progress of surface and production. CAPMA

| Value of production 2011/12 (thousands €) | Value of production 2010/11 (thousands €) | Average price 2011/12 (€/kg) |
|---|---|------------------------------|
| 54,042 | 49,105 | 0.40 |

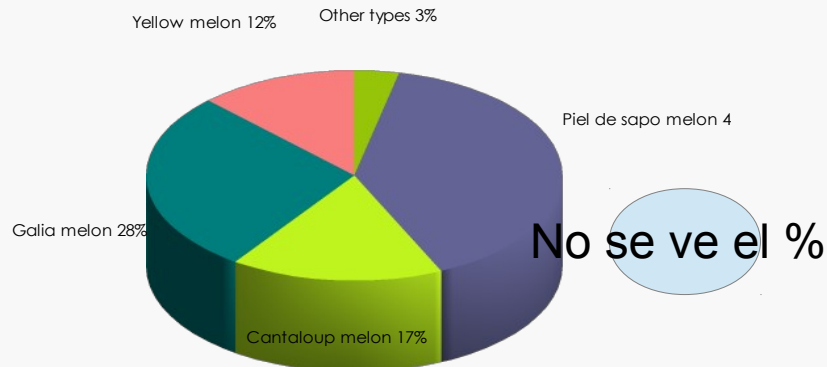
Source: prepared by the author on the basis of data from the Progress of surface and production. November 2012. Market and price observatory. CAPMA

Exports of melons. Almeria

| | 2011/12 | 2010/11 | 2009/10 | 2008/09 |
|---------------------|---------|---------|---------|---------|
| Volume (t) | 59,886 | 71,427 | 83,151 | 82,470 |
| Value (thousands €) | 41,885 | 50,993 | 60,220 | 58,040 |

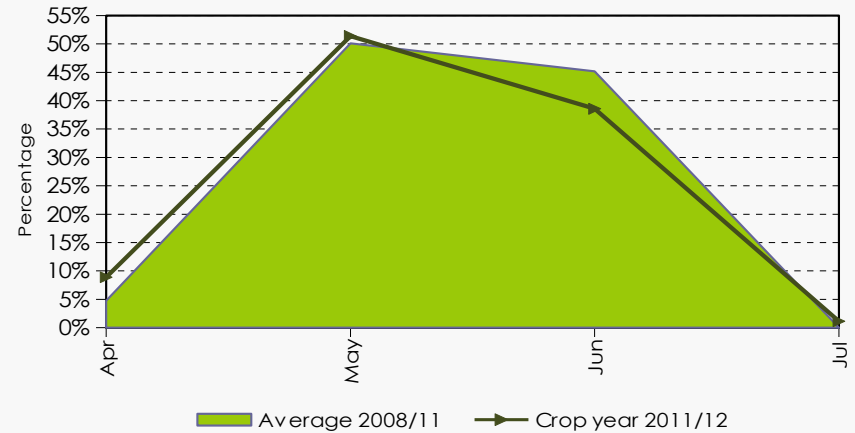
Source: DATACOMEX. The value of the exports corresponds to ex-works price.

Commercial types of melons. Crop year 2011/12



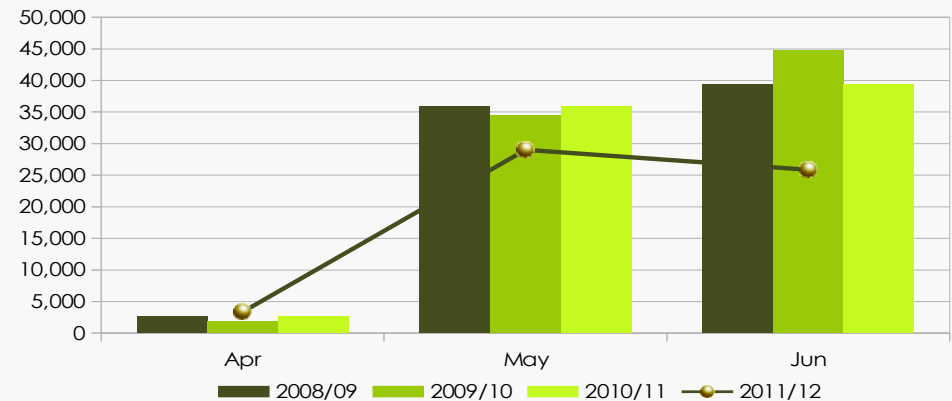
Source: prepared by the author on the basis of data from the Market and price observatory. CAPMA

Monthly breakdown of the volume traded



Source: prepared by the author on the basis of data from the Market and price observatory. CAPMA

Monthly breakdown of the exports



Source: prepared by the author on the basis of data from DATACOMEX. November 2012

- The exports of melons from Almeria have experienced a decline of 16% compared to the previous year and they represent 44% of the volume produced.
- Germany is the main destination of said exports (27%) followed by the Netherlands, France and the UK, which represent between 16% and 19%. Italy and Belgium imports represent less than these figures.

Commercial types of melons



GALIA MELON

Green round melon that turns to yellow or orange when ripen with a dense netted skin. Its flesh is white and slightly green.



CANTALOUPE MELON

Round or elliptic melon with dark green stripes on a grey-green background. It can have smooth or crosslinked skin.



PIEL DE SAPO MELON

Elongated elliptic melon. Its flesh is white, crunchy and sweet.



YELLOW MELON

Slightly oval melon with yellow smooth skin when ripen. Its skin is not netted.



OTHER COMMERCIAL TYPES

This category called "other commercial types" includes those types of melons less marketed, like white melons.

This classification is included in the Price Observatory under the name "not designated".