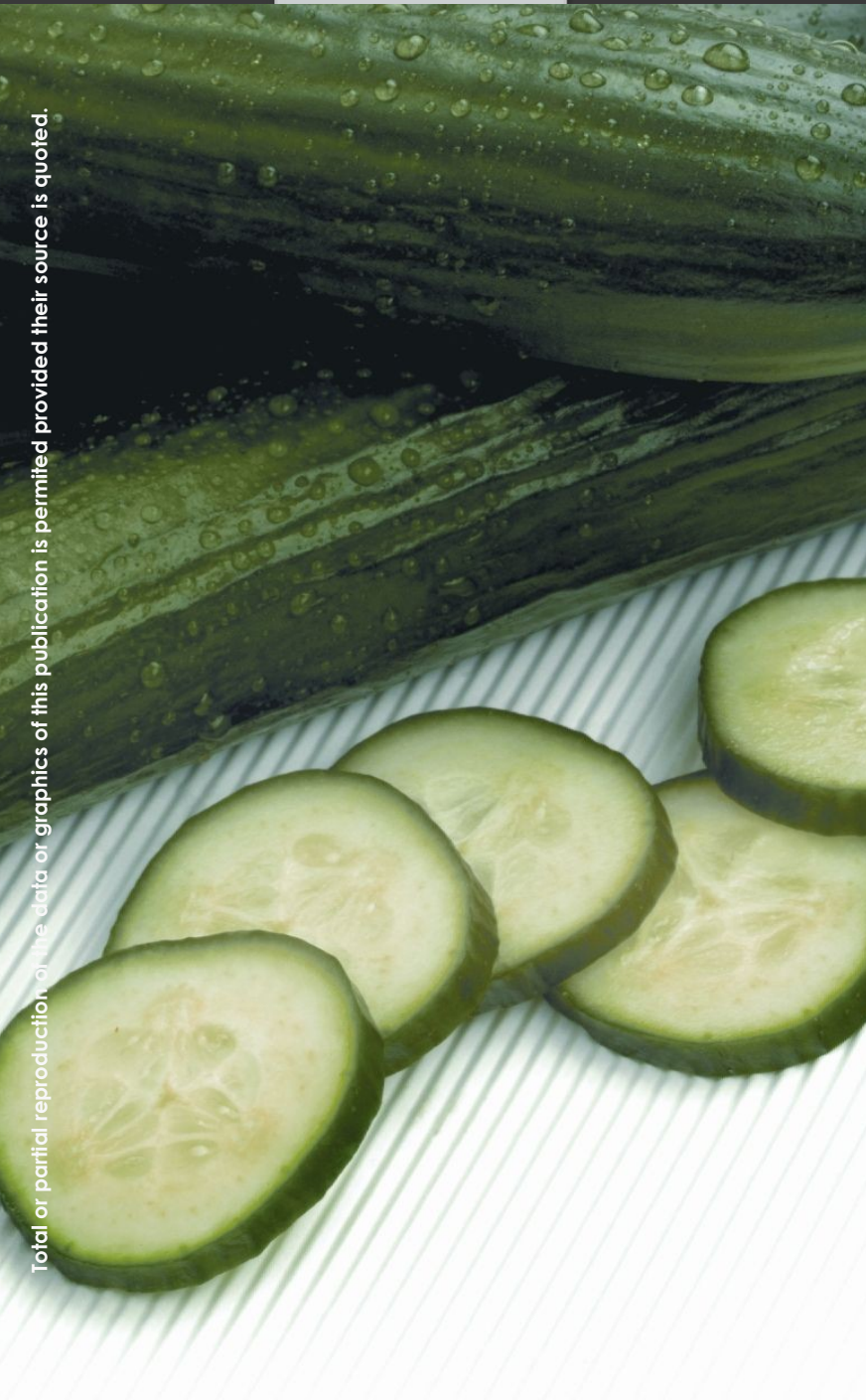


Product information. Crop year 2011/12

Greenhouse horticulture

**CUCUMBER**



## Main information about greenhouse cucumbers. Almeria

	Area (ha) (1)	Production (t) (1)	Yield (kg/m <sup>2</sup> ) (2)
Crop year 2011/12	4,500	407,354	9.05
Difference 2011/12 average 2008/11	0%	6%	6%

Source: (1) Progress of surface and production. November 2012. CAPMA (Spanish acronym for the Regional Ministry for Agriculture, Fisheries and Environment of Andalucía)  
 (2) Figures calculated on the basis of data from the Progress of surface and production. CAPMA

Value of production 2011/12 (thousands €)	Value of production 2010/11 (thousands €)	Average price 2011/12 (€/kg)
171,089	171,141	0.42

Source: prepared by the author on the basis of data from the Progress of surface and production. November 2012. Market and price observatory. CAPMA

	"Almería" cucumber	Pickling cucumber
Average price (€/kg)	0.42	0.44

Source: Market and price observatory. CAPMA

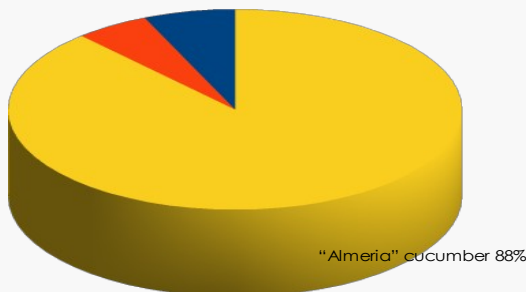
## Exports of cucumber. Almeria

	2011/12	2010/11	2009/10	2008/09
Volume (t)	356,341	308,140	281,222	262,671
Value (thousands €)	266,189	233,504	211,470	234,821

Source: DATACOMEX

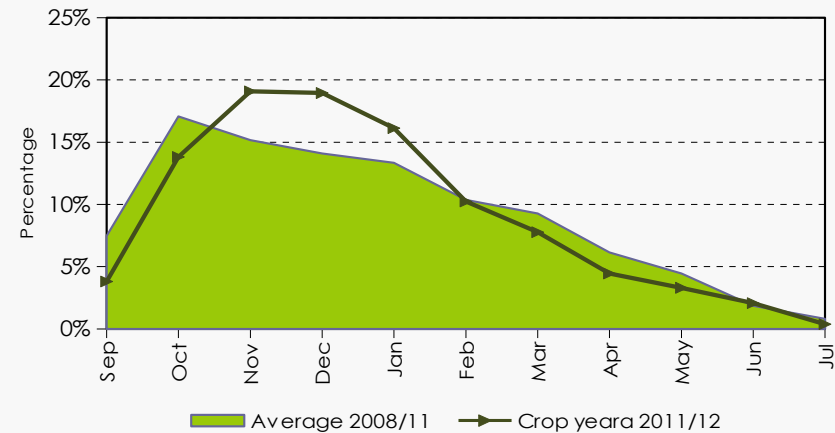
## Commercial types of cucumbers. Crop year 2011/12

Pickling cucumber 7%  
 Slicing cucumber 5%



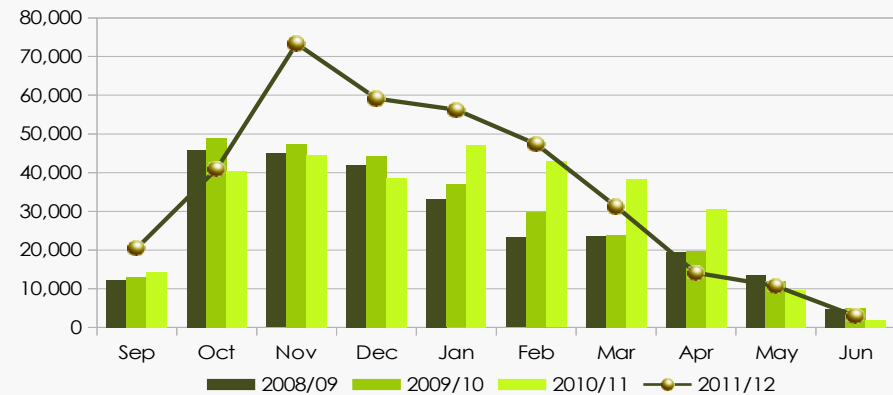
Source: prepared by the author on the basis of data from the Market and price observatory. CAPMA

## Monthly breakdown of the volume traded



Source: prepared by the author on the basis of data from the Market and price observatory. CAPMA

## Monthly breakdown of the exports



Source: prepared by the author on the basis of data from DATACOMEX.

- The exports of cucumbers have a positive economic balance. The growth in export volumes (25%), compared to the average of the three previous crop years, has outweighed the decline in the prices paid for this product (-6%).
- Germany is the main export destination, representing a market share of 45%, followed by the Netherlands and the United Kingdom, both representing 11%.

## Commercial types of cucumbers



### **BURPLESS CUCUMBER – ALSO KNOWN AS “ALMERIA” CUCUMBER**

This cucumber exceeds 25 cm in length. It is dark, straight and smooth, although a bit furrowed.



### **SLICING CUCUMBER - FRENCH**

This cucumber has an average length (20-25 cm). There are varieties which have thorns and there are others whose skin is smooth.



### **PICKLING CUCUMBER**

This commercial type includes varieties of small cucumbers (maximum length 15 cm), with green skin with yellow or white stripes.